

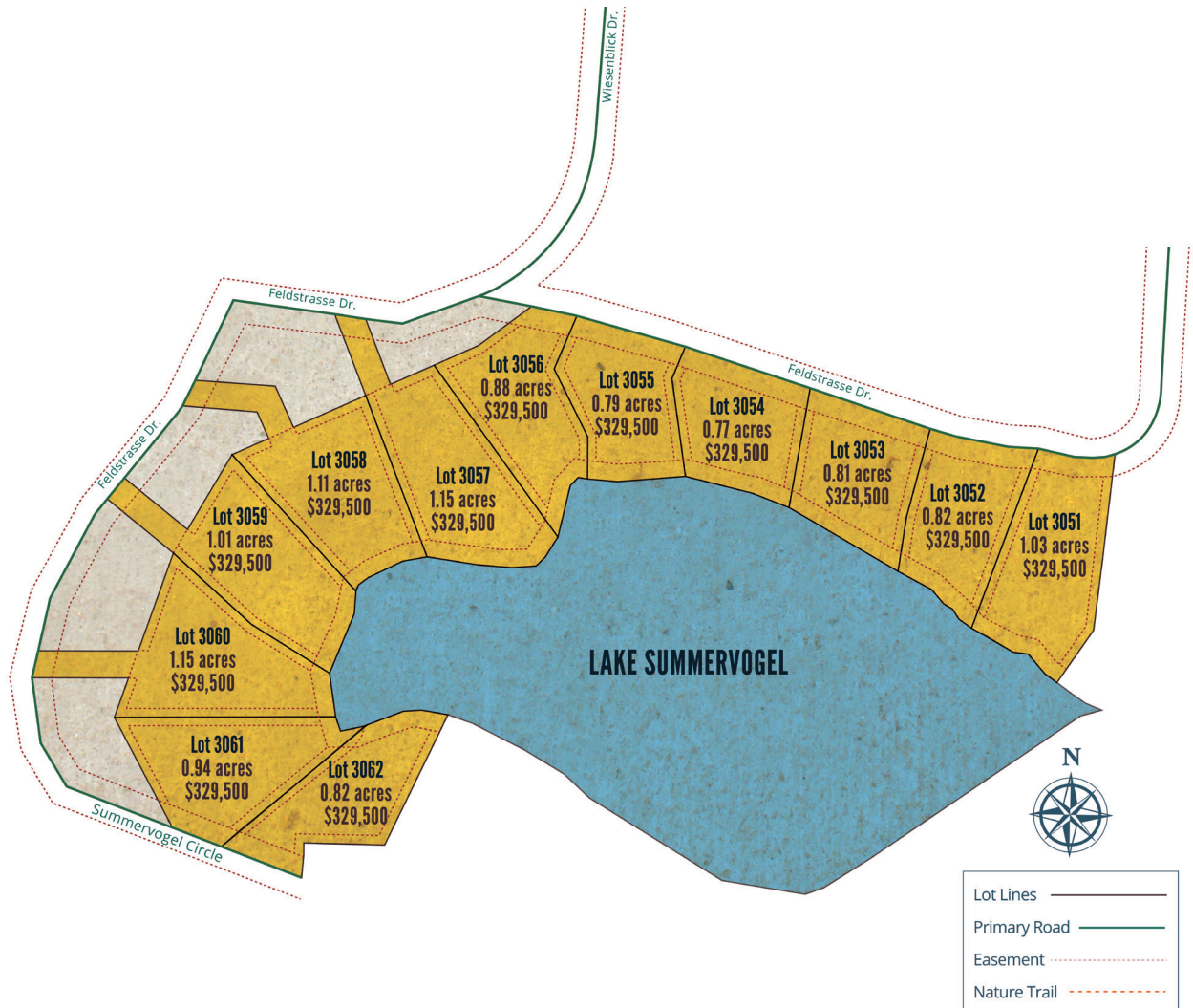
NEW COTTAGE LOTS

Lake Summervogel

New Cottage Community Now Available!

Welcome to the newest cottage community on Lake Summervogel—an 8-acre lake tucked within the scenic Tyrol region of Innsbrook. Just a short walk from the proposed amenity complex, this serene area offers the perfect blend of convenience and natural beauty. Here, you'll have the rare opportunity to build a custom cottage designed to your unique vision, all while enjoying peaceful lake views, wooded surroundings, and access to the best of Innsbrook living. Whether you're looking for a full-time residence or a weekend retreat, Lake Summervogel offers an amazing place to call home.

Lot	Price	Acreage	Setting
3051	\$329,500	1.03 acres	Lakeside
3052	\$329,500	0.82 acres	Lakeside
3053	\$329,500	0.81 acres	Lakeside
3054	\$329,500	0.77 acres	Lakeside
3055	\$329,500	0.79 acres	Lakeside
3056	\$329,500	0.88 acres	Lakeside
3057	\$329,500	1.15 acres	Lakeside
3058	\$329,500	1.11 acres	Lakeside
3059	\$329,500	1.01 acres	Lakeside
3060	\$329,500	1.15 acres	Lakeside
3061	\$329,500	0.94 acres	Lakeside
3062	\$329,500	0.82 acres	Lakeside



This map is for promotional purposes only. Refer to plat map for all measurements, acreage amounts, and applicable easements. Information and prices subject to change.
Map as of 2/10/25 RL

FEATURED COTTAGE COMMUNITY

Lake Tyrol

Phase III sites are now available on west Lake Tyrol!

Explore the natural beauty of the new Tyrolean Region and discover 16+ acre Lake Tyrol. New lots are now available for custom cottages in this new area of development, with 1,500 beautiful acres of forest and lakes for future development.

*This map is for promotional purposes only. Refer to plat map for all measurements, acreage amounts and applicable easements. Information and prices subject to change. Nature trails are representative only.
Updated: 1/30/25 RL*

Lot	Price	Acreage	Setting
2709	\$89,750	1.87 acres	Woods
2710	\$89,750	1.48 acres	Woods
2764	\$99,750	1.26 acres	Woods
2765	\$99,750	1.26 acres	Woods

NFS - Not for sale

